

# *Offbeat Mara Camp*

*Mara North Conservancy, Kenya*

Factsheet



## *Location*

Offbeat Mara Camp is situated on the Olare Orok water system, in the Mara North Conservancy (MNC), just north of the Masai Mara Game Reserve in Kenya.

## *Camp Information*

Offbeat Mara Camp is a 7 tent traditional semi-permanent camp. Situated on an unspoilt part of Masailand, an area full of wildlife but far from any other camp or lodge. The MNC has fantastic wildlife viewing all year round, including the Offbeat Lion pride just outside of camp. The MNC has low camp/lodge density and is open only to member camps, with a strict number of vehicles permitted at sightings.

The camp's mess tent is central to the camp's layout. Informal dining is hosted in the mess tent or on the forest deck. Delicious English breakfasts, lighter lunches and three course dinners are served each evening. Guests can also relax at the bar or by the fire in the living room area; which is furnished with comfortable sofas and a small library. The mess tent has Wifi and charging facilities (on between 6pm – 10pm). All game drive vehicles are also equipped with charging sockets which can be used during game drives.

Offbeat Mara Camp works closely with the local Maasai community and the majority of our staff are from this area. All our guides are graduates of the Koiyaki Guiding School and all have KPSGA SILVER badges.

The Mara offers amazing wildlife viewing throughout the year and features the annual wildebeest migration in July to September.





## *Accommodation*

The camp sleeps a maximum of 20 guests in four large double/twin en suite tents, and then a further three family tents, which are a double and twin unit, also with an en suite bathroom. These family units can also make for a lovely honeymooners tent, with more space and privacy. The en-suite bathrooms each have hot safari showers, double washbasins and flush loo's. Our newest family tent is slightly bigger. It has two units that are connected by a corridor; a master bedroom and a kids' bedroom. Both rooms are en-suite.

The spacious tents are all furnished with large, hand made cedar beds, solar lighting and the finest linen. The dimensions and layouts for both the standard and family tents can be found further on in this fact sheet.

## *Activities*

- Day and afternoon/evening game drives in fully equipped custom-designed Land Cruisers (all vehicles are open-sided with roof hatches for each row of seats, plus power sockets for charging cameras etc). We are able to use red-filtered spotlights until 10.00pm.
- Guided walking safaris with an armed guide.
- Bush breakfasts, bush dinners and sundowners.
- Full day picnic lunch drives (to the wildebeest crossing points – approx. 1.5 hrs game drive each way).
- Line fishing for catfish
- Visits to a Maasai village and Aitong Primary School (approx. 1 hour each way from camp).
- Hot Air Balloon Safaris (from Governors Camp, 1 hour game drive away).



## *Rates Include*

Rates include full board luxury accommodation, all game drives, walking and meals, house-wines, spirits, beer, soft drinks and laundry. Not included are Champagne, late departure, extra lunch, visits to the Masai village and rhino sanctuary, private use of vehicle and gratuities.



## *Seasons*

The camp is open from January to mid-April, June to mid-November and the whole of December. We close for the rains mid April to end of May and also the second half of November. Days are warm and nights can be cool.



## *Access*

Three times daily schedule with Air Kenya and Safarilink from Nairobi to MARA NORTH airstrip. The camp is a 60-minute game drive away from the airstrip. There is also a daily service to Mara North from Loisaba, Nanyuki and also the coast.

Private air charters also fly to Mara North airstrip.

5 hour drive from Nairobi (4x4 vehicle required).





## *Contacts*

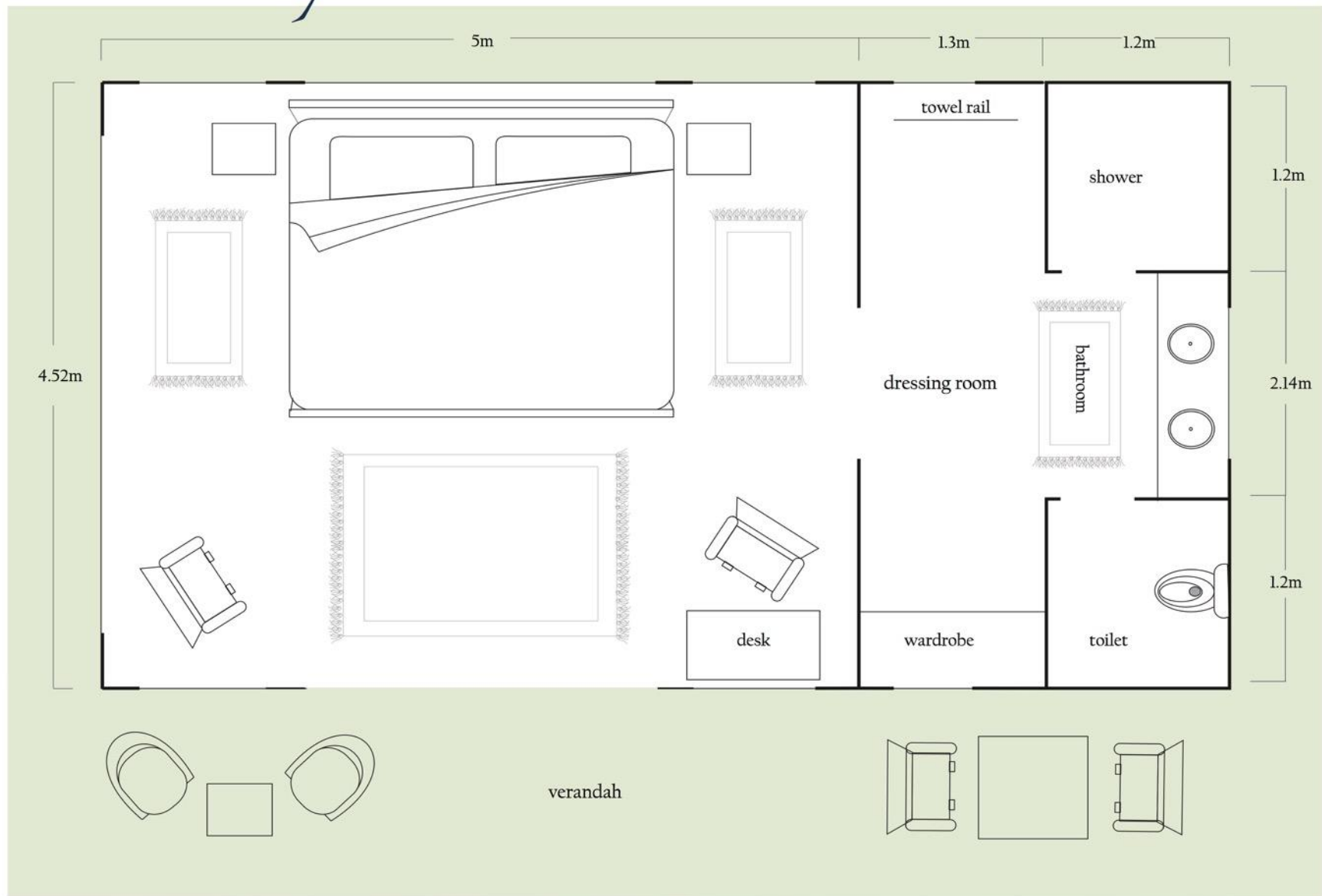
[bookings@offbeatsafaris.com](mailto:bookings@offbeatsafaris.com)

+254 (0)704 909355 / 6

[www.offbeatsafaris.com](http://www.offbeatsafaris.com)



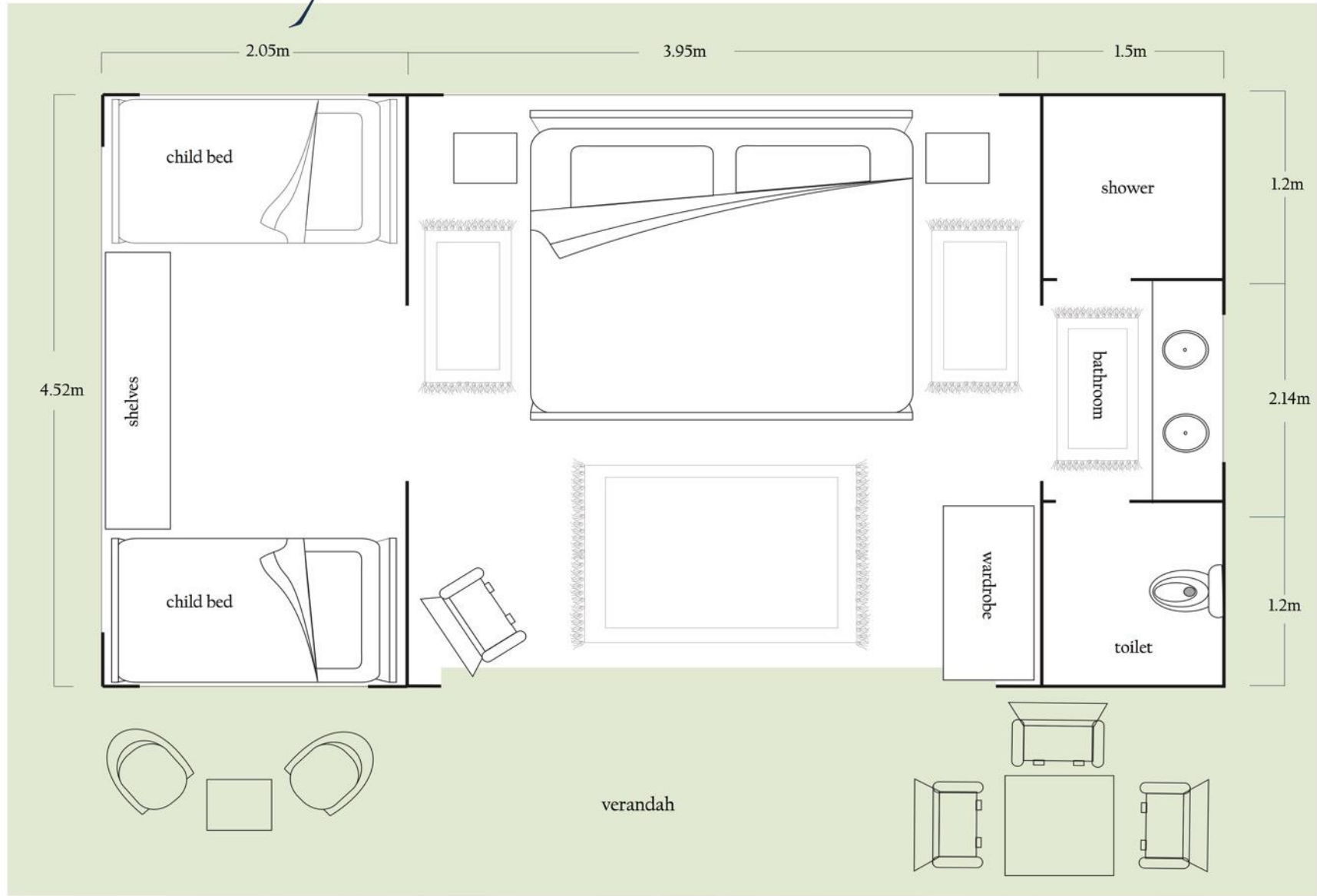
# Offbeat Mara Camp Standard Tent Floor Plan



Please note: There are curtains dividing the rooms, the shower and the toilet.



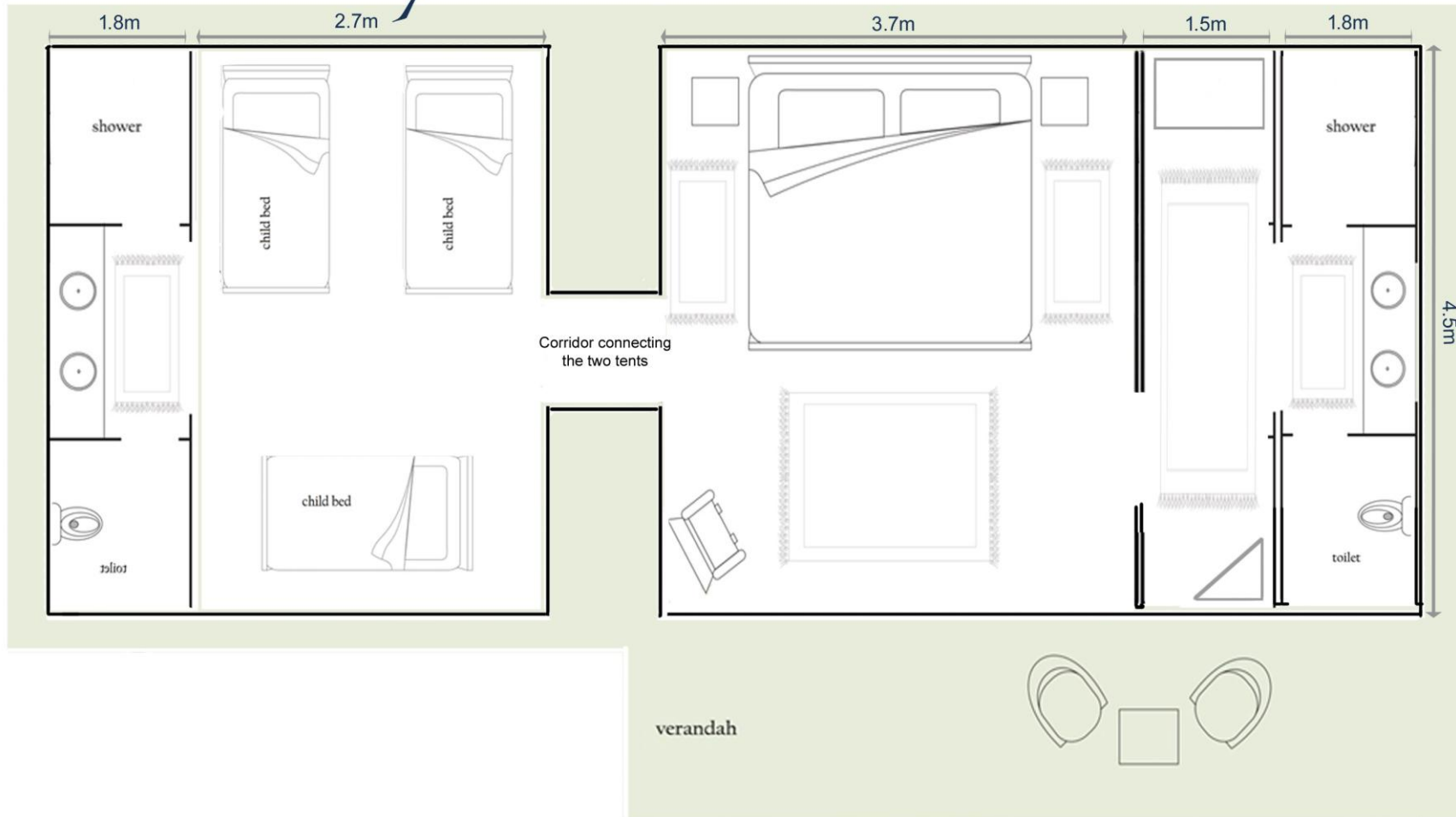
# Offbeat Mara Camp Family Tent Floor Plan



Please note: There are curtains dividing the rooms, the shower and the toilet.



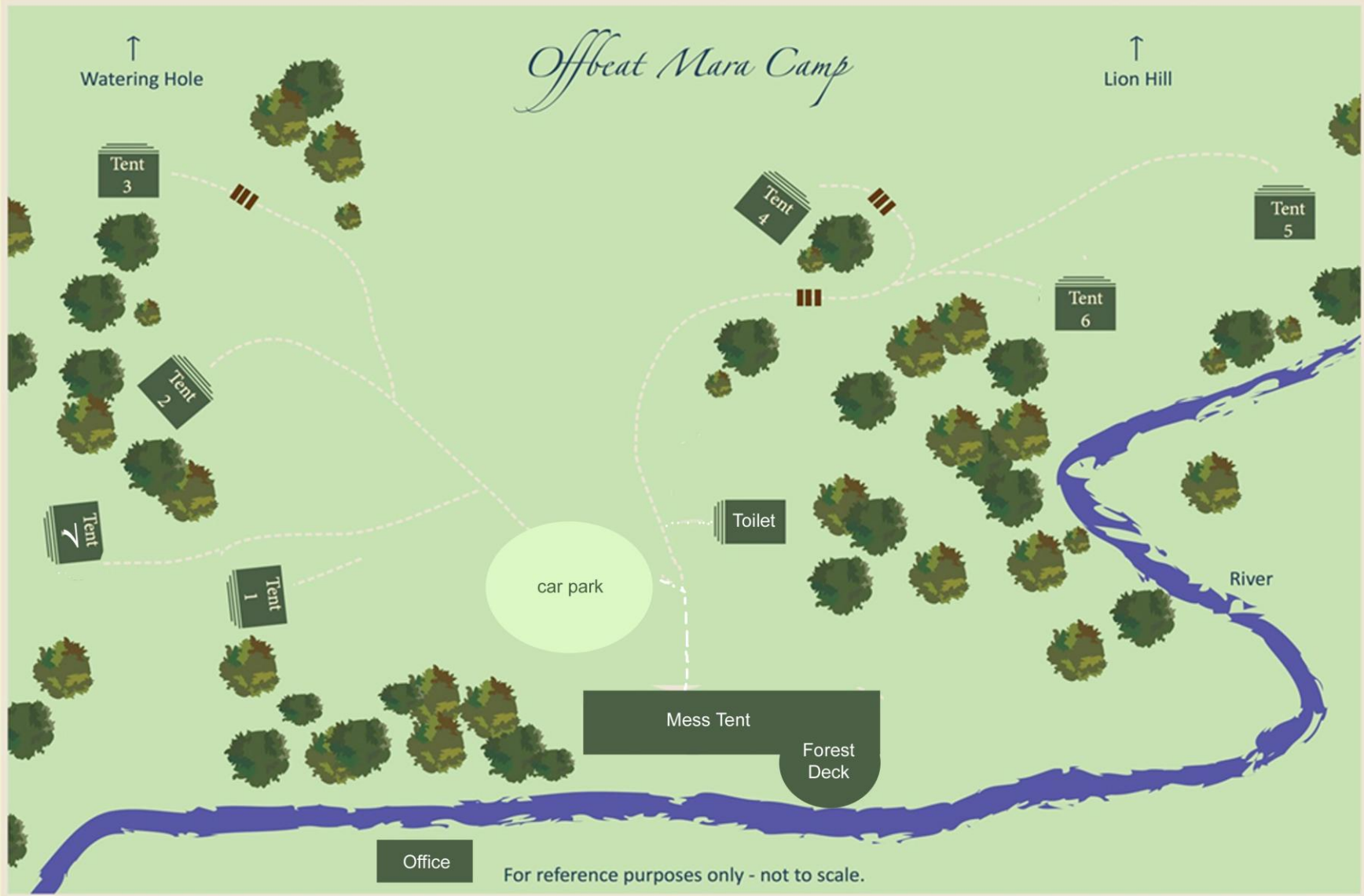
# Offbeat Mara Camp *New Family Tent Floor Plan*



Please note: There are curtains dividing the rooms, the shower and the toilet.

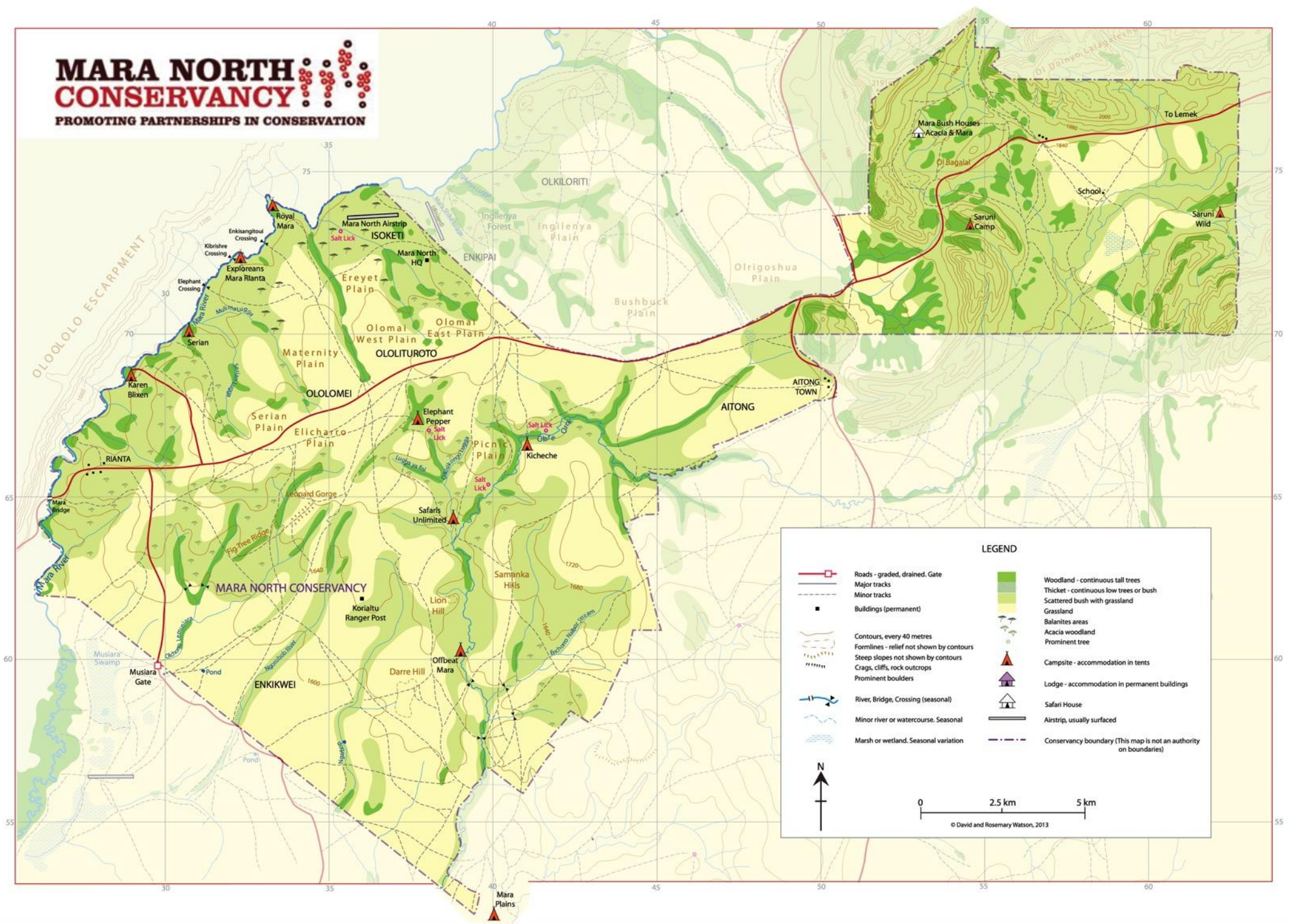






# MARA NORTH CONSERVANCY

PROMOTING PARTNERSHIPS IN CONSERVATION



**LEGEND**

	Roads - graded, drained. Gate		Woodland - continuous tall trees
	Major tracks		Thicket - continuous low trees or bush
	Minor tracks		Scattered bush with grassland
	Buildings (permanent)		Grassland
	Contours, every 40 metres		Balanites areas
	Formlines - relief not shown by contours		Acacia woodland
	Steep slopes not shown by contours		Prominent tree
	Crags, cliffs, rock outcrops		Campsite - accommodation in tents
	Prominent boulders		Lodge - accommodation in permanent buildings
	River, Bridge, Crossing (seasonal)		Safari House
	Minor river or watercourse. Seasonal		Airstrip, usually surfaced
	Marsh or wetland. Seasonal variation		Conservancy boundary (This map is not an authority on boundaries)

© David and Rosemary Watson, 2013