



Sosian Lodge

Laikipia, Kenya

Factsheet 2018



Location

Sosian is a 24,000acre private conservancy and working ranch, that sits on the equator at 5700ft. We are 80km from Nanyuki town, in West Laikipia. With views of Mt Kenya and the expansive Laikipia Plateau to explore, Sosian is located in one of Kenya's premier wilderness areas.

Lodge Information

Sosian, the Samburu word for 'Wild Date Palm', combines comfort with wilderness; ideal for those looking for a unique and intimate bush experience. With an abundance of wildlife, including elephant, buffalo, lion, leopard, hippo, giraffe as well as many rare species such as wild dog, Grevy's zebra and Jackson's hartebeest, guests may enjoy a fantastically private wildlife viewing experience. With more than 250 species of birds, this is also a birders paradise.

Sosian is personally hosted by a highly experienced team of managers and local staff, who create an effortlessly warm and relaxed atmosphere, making you feel right at home. Days are tailored to each individual guest with a vast array of safari activities on offer.



Accommodation

Guests are accommodated in an elegant 1940's ranch house that has been beautifully renovated. Within the lodge gardens are 3 cottages each with 2 separate bedrooms. There is more space for children if needed, in the family cottage, which has a further interconnecting room to sleep another three children, with their own bathroom. All the rooms are en suite and have their own private verandas.

There is also a larger and more private honeymoon cottage, known as the Italian Cottage, built by Italian artisans. In total, Sosian can sleep up to 16 guests.

There is also a swimming pool, tennis court, and an organic vegetable garden. Sosian is well known for its delicious home cooking using fresh ingredients from the garden.



Activities

- Day and night game drives in fully equipped custom-designed Land Cruisers
- Bush breakfasts/brunches, dinners and sundowners
- Fly camping (with or without horses)
- Horse riding (1-3 hour guided rides).
- Camel treks
- Walking (1-3 hours with an armed guide).
- Fishing (course fishing in the dams and rivers for catfish, barble and tilapia)
- River kayaking, tubing and waterfall jumping
- Cattle ranching (join the ranch manager for a morning to learn about ranching in Kenya)
- Swimming pool & tennis court

Rates Include

Rates include full board luxury accommodation, plus house-wines, spirits, beer, soft drinks and laundry. All activities are also included. Champagne and gratuities are not included.

Seasons

Sosian is open all year round. **Mid season:** 03 Jan – 30 Jun, 01-30 Sep, 01 Nov – 19 Dec. **High season:** July, August & October. **Peak Season:** 20 December – 02 January.

Access

There are daily scheduled flights to/from Nairobi and the Masai Mara, from Loisaba and Nanyuki airstrips (Sosian will transfer to/from both, at extra cost).

Private charters (Sosian has its own airstrip 10 minutes from the lodge).

5 hours by road from Nairobi (4x4 recommended).

Contacts

lodge@sosian.com
+254 (0)704 909357
www.sosian.com



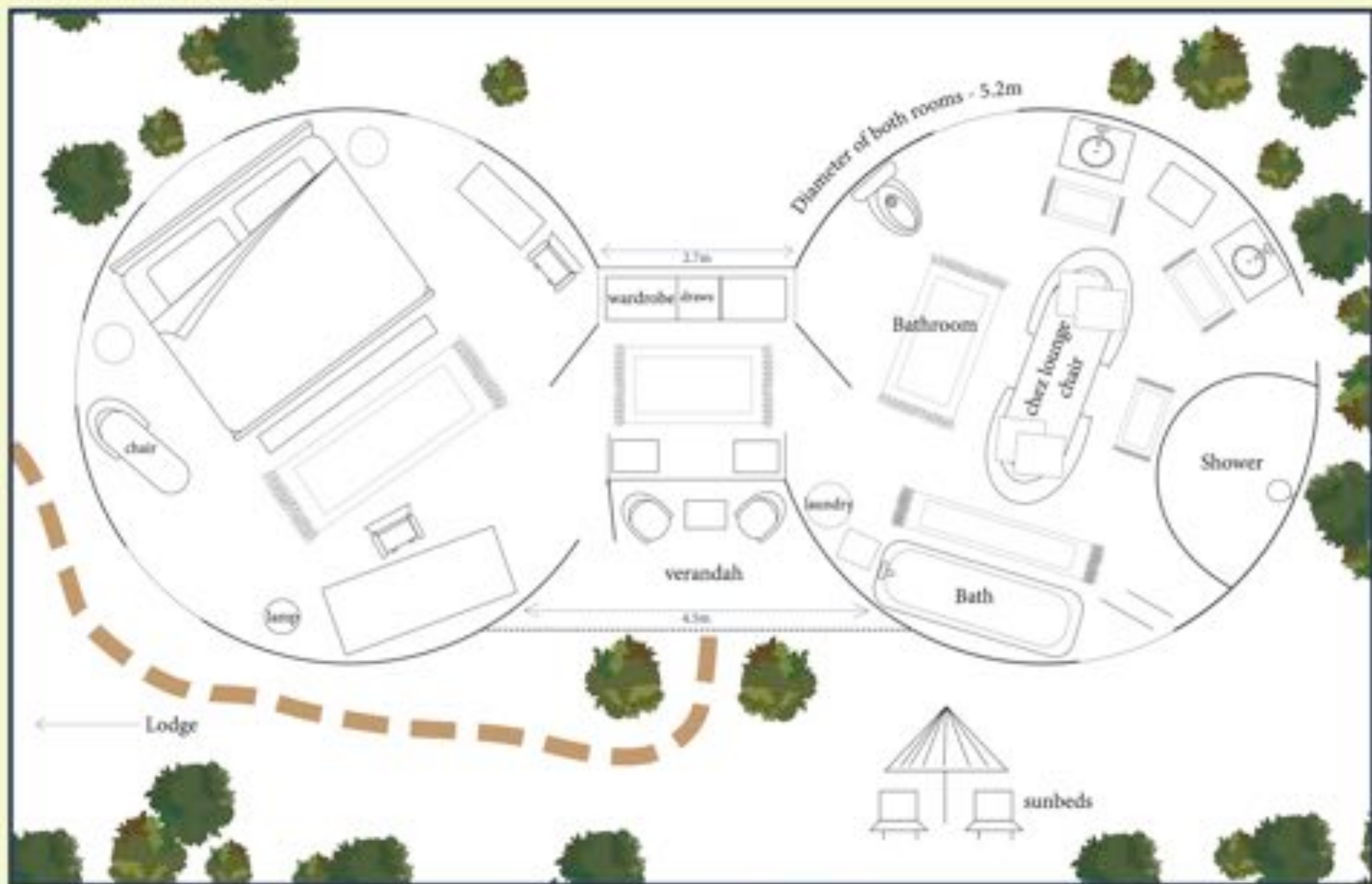
Sosian Lodge layout



For reference purposes only - not to scale.



Sosian Italian Cottage



For reference purposes only - not to scale.



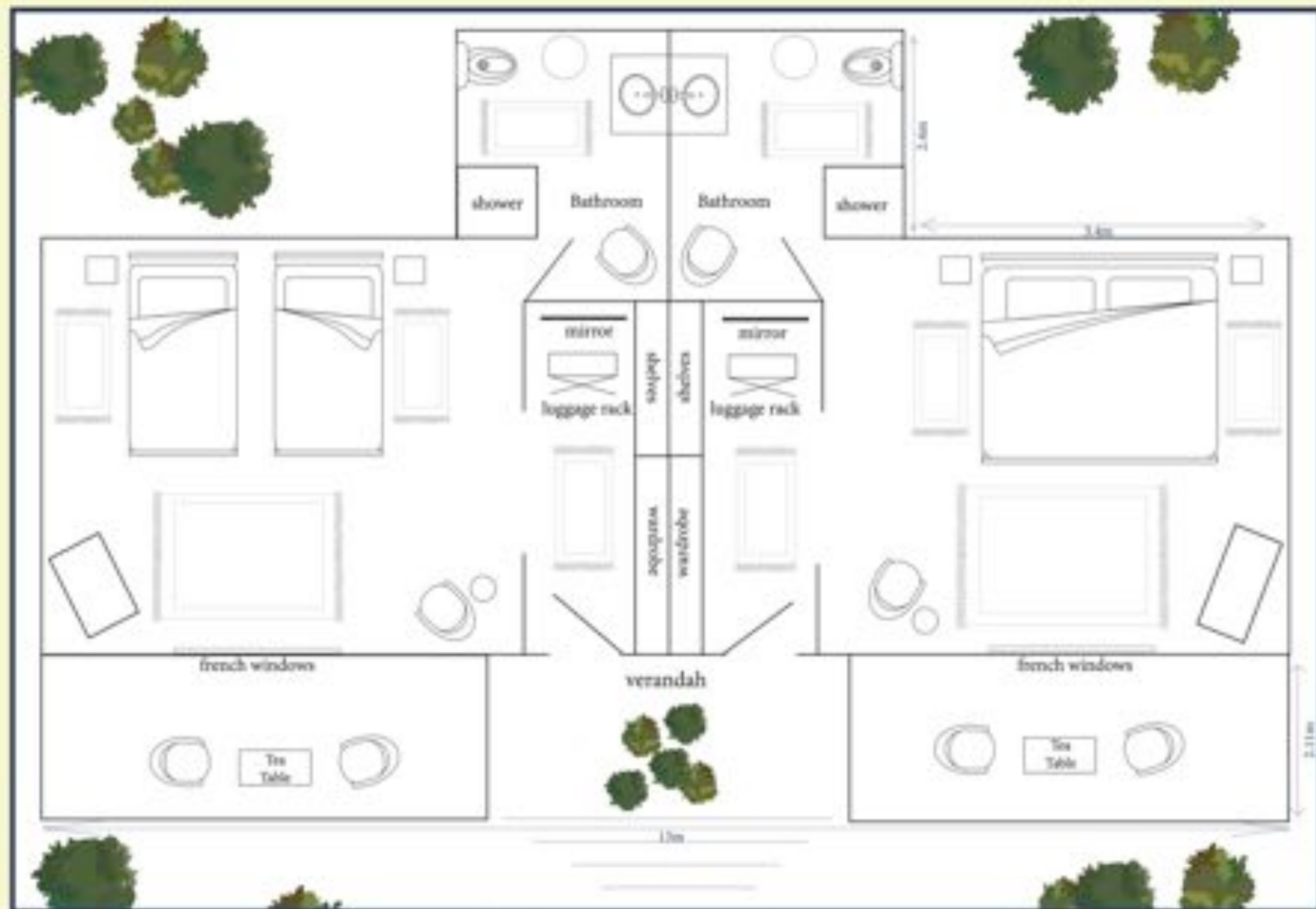
Sosian Cottage 1



For reference purposes only - not to scale.



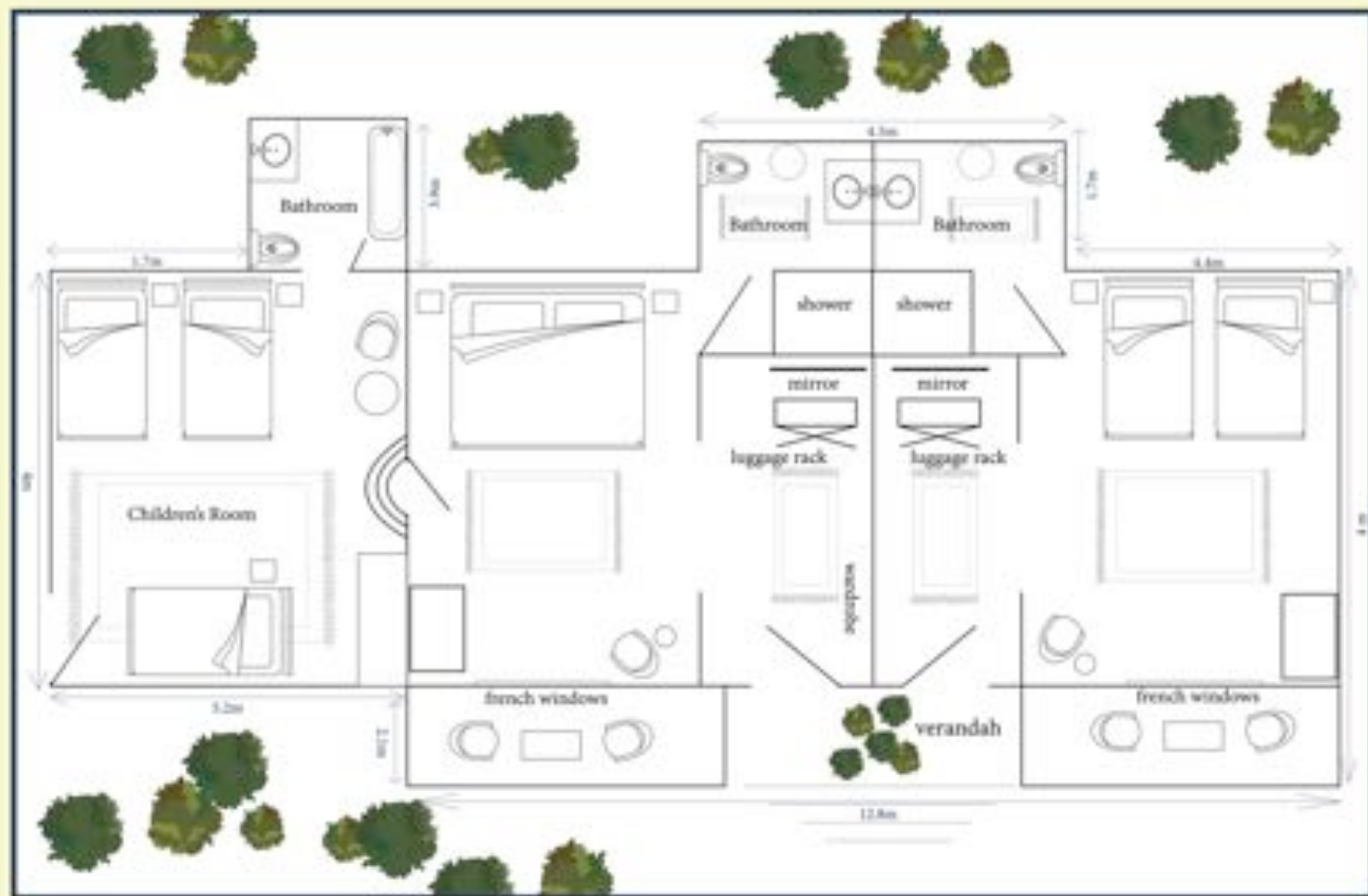
Sosian Cottage 2



For reference purposes only - not to scale.



Sosian Cottage 3



For reference purposes only - not to scale.



Sosian map



For reference purposes only - not to scale.

